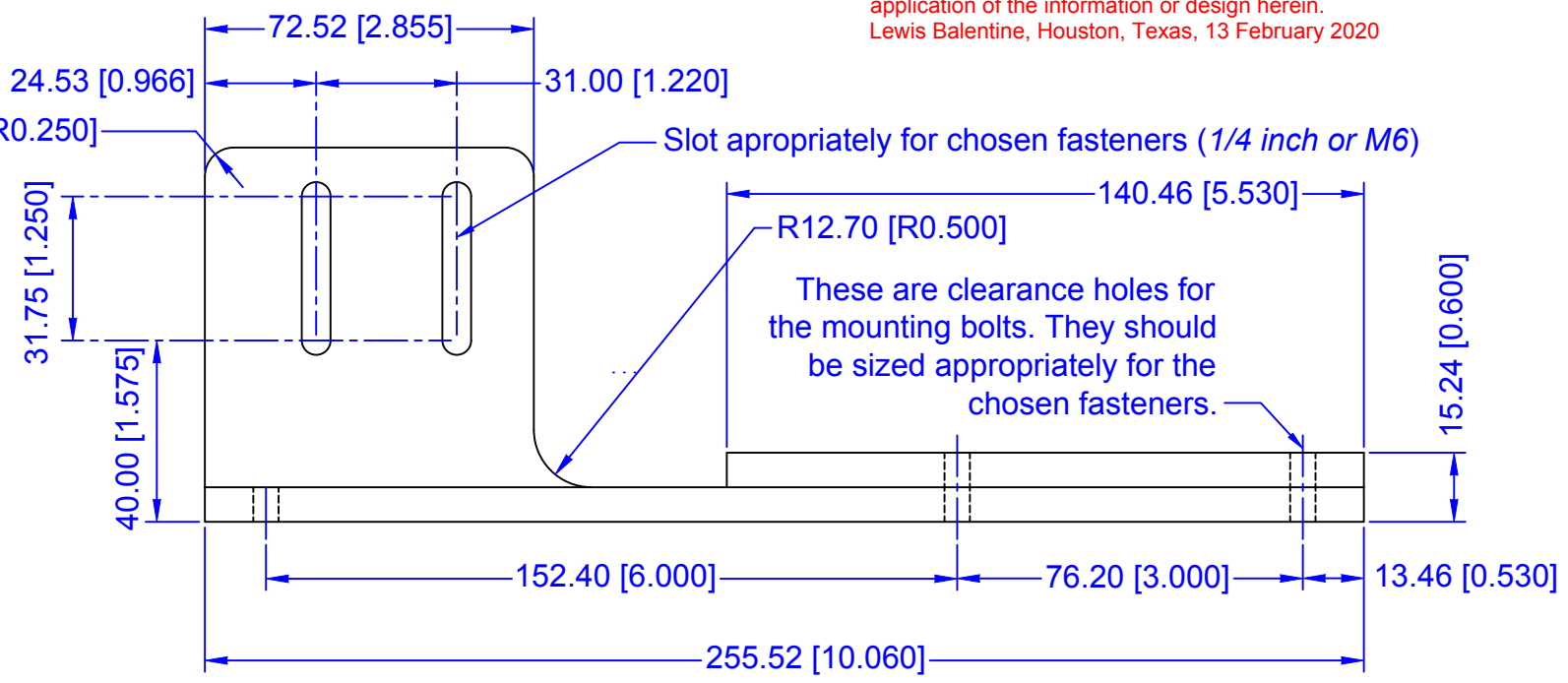
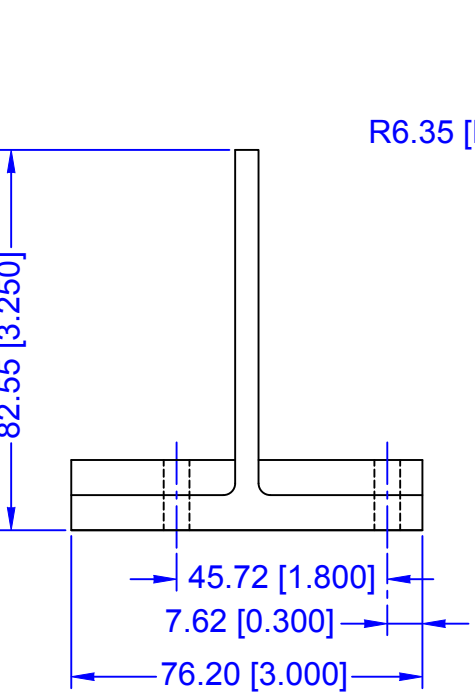


**Rough Cut 4 x 3 Inch Extruded Aluminum I-Beam**

This document/file is placed in the **PUBLIC DOMAIN**. The author assumes no liability for the accuracy, fitness or application of the information or design herein.  
Lewis Balentine, Houston, Texas, 13 February 2020



**Aluminum Mounting Base for Taig Lathe**

Unless otherwise noted all dimensions are in millimeters [inches]